


პანექსი  PANEX



**Build Fast, Smart & Green
with Georgian-Made Excellence**



Mercedes Benz Dealership Tbilisi

Why Polyurethane Sandwich Panels?

Reduce Construction Time by Up to 10x

Buildings made with Panex polyurethane sandwich panels can be assembled **10 times faster** than those using traditional materials like brick or concrete. Accelerate your project timelines without compromising quality!

50+ Years of Unmatched Energy Efficiency

Backed by **PU Europe Association** research, our polyurethane foam maintains exceptional thermal performance over decades. Even after **33 years** in use, its thermal conductivity remains stable at just **0.022 W/(m·K)** – ensuring long-term savings and sustainability.

Timeless Aesthetics, Customized for You

Panex sandwich panels are precision engineered to your specifications, with no need for additional interior or exterior finishing. Choose from an **extensive color palette** to bring even the most sophisticated architectural visions to life – straight from the factory to your site.

Secret Fix Lock

Add modern appearance to your building's façade with the **Secret Fix Lock** – the fastening system that combines sleek design with superior performance. No visible fasteners mean a clean, seamless look that enhances the aesthetic appeal of any industrial or commercial building. **Enhanced Durability** – with no protruding elements, corrosion and contamination's risk is significantly reduced, as the lock is shielded from moisture and harsh environmental factors. **The smooth, flush surface** prevents dirt buildup and minimizes wear, ensuring long-lasting performance with minimal upkeep.



U-Value 0,022 W/(m·K)



Fire Resistance B2



Saves up to 162 Kw*h
per 1 sq. m annually



Waterproof



Cost Savings
on Transportation



Reduced
Foundation Costs



Maximized Usable Space

Why Panex?

Build Fast, Smart & Green with Georgian-Made Excellence

Choose Panex sandwich panels – **proudly manufactured in Georgia**, just 20 km from Tbilisi. Produced on a fully automated line with cutting-edge Korean and Italian equipment, our panels combine **local precision** with **global innovation** – delivering speed, sustainability, and superior quality for your projects.

11 years

In business

20 km

South of Tbilisi

2,5 mln sq. m

Continuous automatic line capacity

100%

Italian and Korean equipment



About Panex



4500 m²

manufacturing area

50

employees

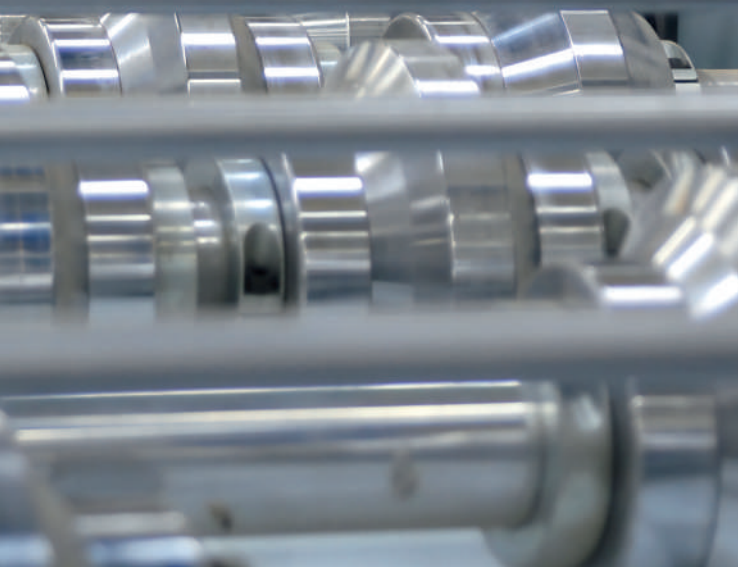
21%

manufacture growth 2024

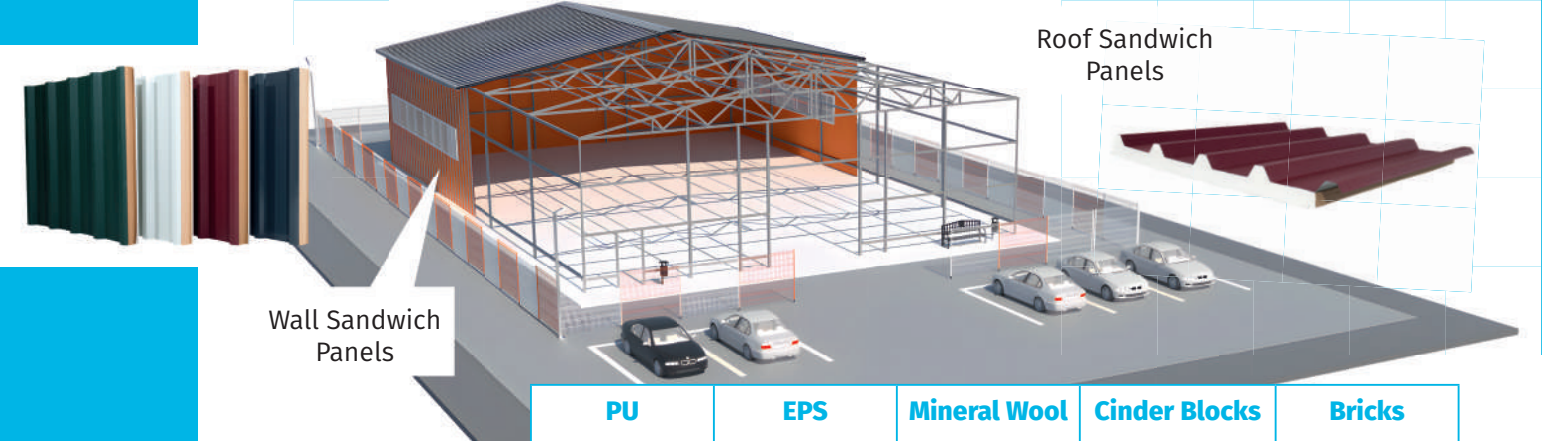
5

export countries





Polyurethane Sandwich Panels for your Warehouses, Cold Rooms, Industrial Buildings, etc.



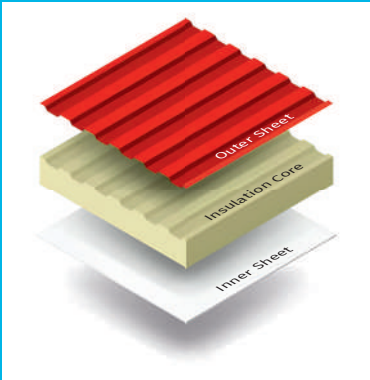
| | PU | EPS | Mineral Wool | Cinder Blocks | Bricks |
|---|-------|-------------|--------------|---------------|--------|
| Thermal conductivity | 0.022 | 0.038-0,052 | 0.041 | 0.160 | 0.370 |
| Thickness, cm, to retain the needed temperature on the same level | 10 | 16 | 26.4 | 73 | 168 |
| Volume of materials needed for a 10 sq. m wall, in m ³ | 1.0 | 1.6 | 2.6 | 7.3 | 16.8 |
| 10 sq. m wall weight, in kg | 124 | 161 | 382 | 2 920 | 20 160 |

With sandwich panels metal thickness 0.04 cm, polyurethane density 42 kg/m³, mineral wool density 115 kg/m³, polystyrene foam density 15 kg/m³



Technical Facts About Sandwich Panels

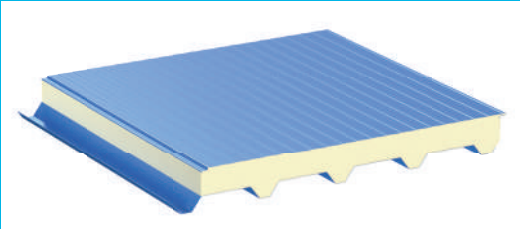
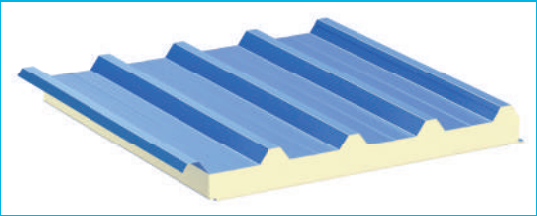
Sandwich panels consist of three layers. Both sides are covered with galvanized and painted coated metal sheets and a protective film for transportation. The space between the metal sheets is filled with an insulating layer, polyurethane foam.



- **Top layer**
Painted galvanized metal sheet
- **Insulation Core**
Polyurethane
- **Bottom layer**
Painted galvanized metal sheet
- **Metal thickness**
Inner/Top – Standard – 0.04 cm (from 0.03 cm to 0.05 cm upon request)
External/Top – Standard 0.04 cm (from 0.03 cm to 0.05 cm upon request)
- **Polyurethane density**
38–40 ±2 kg/m³
- **Standard color**
Light gray (RAL 9002). Other colors available on request
- **Steel compliant with ECCA**
(European Roll Coating Association) standards

| Thickness, cm | Length, cm | Width, cm | Roof panels' rib height, cm | Thermal conductivity | Fire resistance |
|---------------|-------------|-----------|-----------------------------|----------------------|-----------------|
| 4–15 | Up to 1 700 | 100 | 4 | 0,022 W/(mK) | B2 |

Roof panel
Metal Sheet Profiling:
T50, T110, or smooth



Wall panel
Metal Sheet Profiling:
T50, T110, M25, or smooth



Solar Panels



Save the Planet



30% cost reduction
for heating
or air conditioning



Sturdy construction
without cold bridges
with unique fastening system

Roof Mounted



Wall Mounted

Accessories for Sandwich Panels

Steel by leading European manufacturers



Outer corner



Z p



mp



U pro

Sliding and Hinged Isothermal Doors

for Refrigerating Chambers



Door Technical Details

| Height, cm | Length, cm | Width, cm | Insulation Core | Thermal Conductivity | Hardware | Door Types |
|------------|------------|-----------|-----------------|----------------------|---------------------------|-----------------|
| Up to 600 | Up to 600 | 8, 12 | Polyurethane | 0,022 W/(mK) | By top European companies | Sliding, Hinged |

Silicone Curtains

WIDTH – 20 cm
THICKNESS – 0.2 , 0.3, or 0.4 cm





**Coca-Cola
Natakhtari**



The logo features a stylized, white, three-dimensional sunburst or flame-like shape positioned above the word "BREADFIELD".

BREADFIELD

**BreadField
Tbilisi**





Անիգոզի Նճրագարան

**Anigozi
Martkopi**





**Askaneli
Kakheti**





PM Motors Wine Factory Tbilisi





Eco-friendly



Faster Build Speed



Light Weight



Energy saving

Tbilisi



Tbilisi
International
Airport

PANEX 

Rustavi

17th km of the Red Bridge highway, Rustavi, Georgia
(+995) 022 005 005 • info@panex.ge

პანექსი



PANEX